

**Nikon**

# Windows XP Home Edition / Windows XP Professional

COOLPIX5000/995/885/775

**This manual is for those users of the COOLPIX5000/995/885/775 who are running Nikon View 4 (Version4.3.1) under Windows XP Home Edition / Professional.**

## Installing Nikon View 4

Follow the installer instructions to install Nikon View 4 .

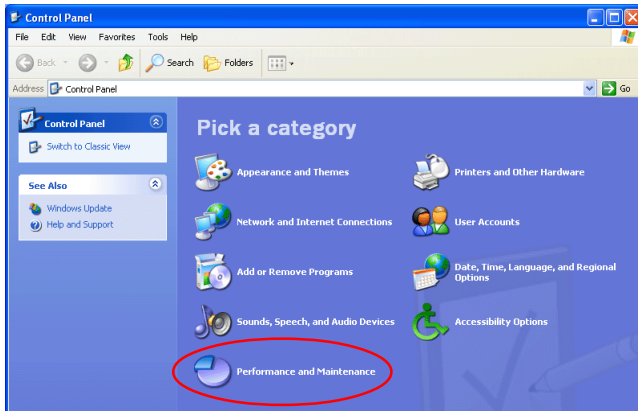
## Device Registration

The camera must be registered as a hardware device when it is connected to the computer for the first time.

Windows XP will automatically register the COOLPIX5000/995/885/775. When the Removable Disk (Autoplay) window, or the Nikon View 4 Image Transfer window appears automatically on the screen, registration has been completed. Follow the steps below to confirm that the camera is correctly registered with Windows.

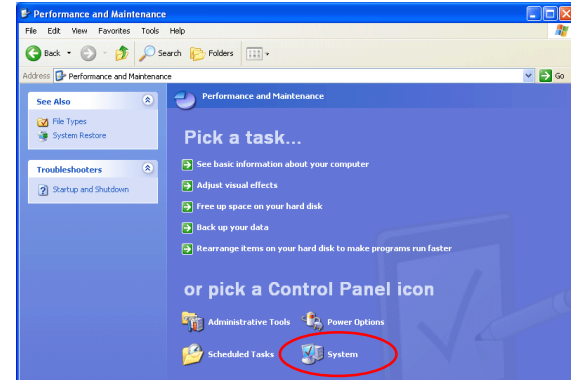
### Step 1

Select **Control Panel** from the **Start** menu to display the window shown below. Click **Performance and Maintenance**.



### Step 2

Click **System** to open the System Properties window.



### Step 3

Select the Hardware tab and click the **Device Manager** button.

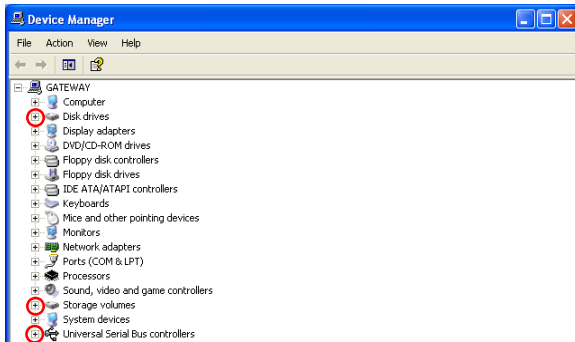


### Log On

You will need to log on as the "Computer Administrator" when installing, uninstalling and using Nikon View 4.

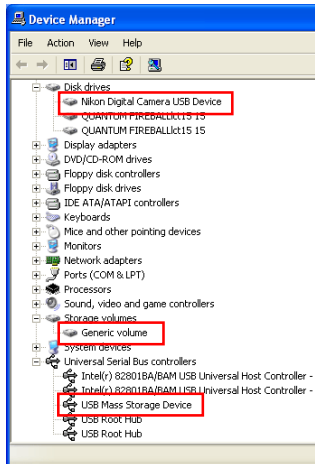
## Step 4

The Device Manager will be displayed. After confirming that “Universal Serial Bus controllers,” “Disk drives,” and “Storage volumes” are listed in the Device Manager, click the “+” sign next to each of these device types.



## Step 5

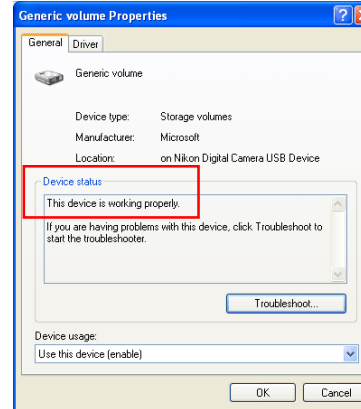
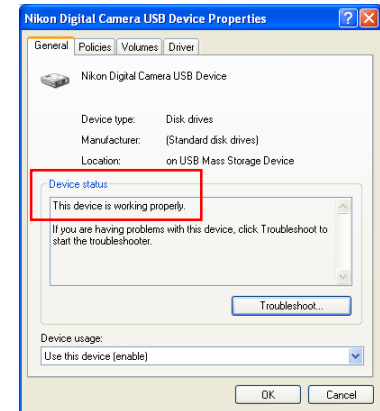
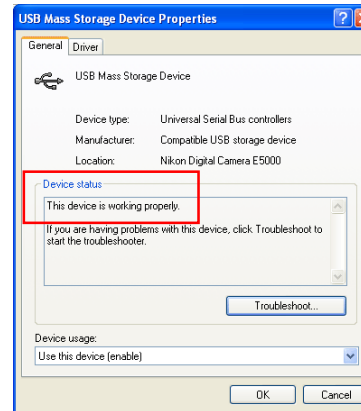
After confirming that “USB Mass Storage Device,” “Nikon Digital Camera USB Device,” and “Generic volume” are listed respectively under “Universal Serial Bus controllers,” “Disk drives,” and “Storage volumes,” double click each of these listings to open the associated Properties window.



If instead the listing “NIKON DSC E5000 (995/885/775)” appears under “Other Devices”, delete this listing and turn the camera off and then on again. The required device drivers will be installed automatically.

## Step 6

Click the General tab for each device and confirm that “This device is working properly” appears under “Device status”. Click **OK**.



Close the Device Manager, then click **OK** to close the System Properties window. Device registration is now complete.

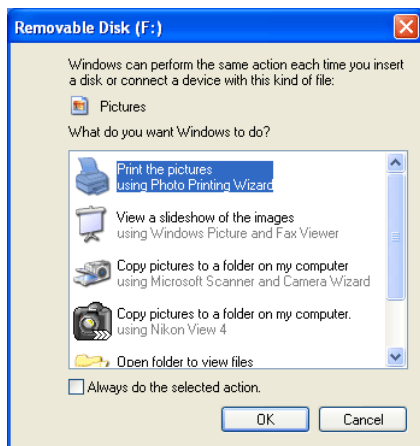
## Starting Nikon View 4

### Using a COOLPIX5000/995/885/775

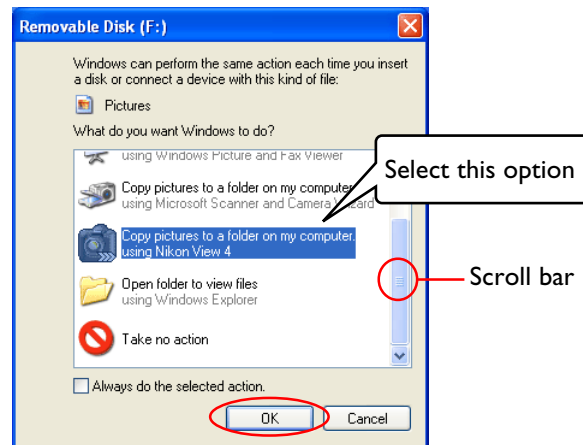
The Removable Disk (Autoplay) window will appear automatically when a COOLPIX5000/995/885/775 is connected to the computer via a USB cable, and turned on.

### Using a card reader/card slot

The Removable Disk (AutoPlay) window will appear automatically.



To start Nikon View 4, select **Copy pictures to a folder on my computer using Nikon View 4** from the options listed in the Removable Disk window and click **OK**. If **Copy pictures to a folder on my computer using Nikon View 4** is not visible, drag the scroll bar until the Nikon View 4 option is displayed.



Click OK to start Nikon View 4



### Movie Files

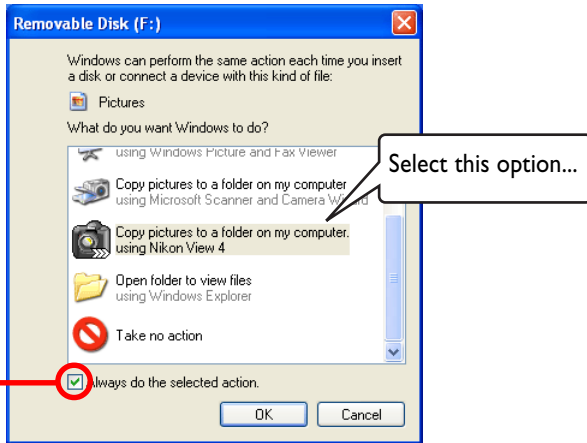
The Removable Disk (AutoPlay) window will not be displayed if the memory card contains only movie files.

### TRANSFER button

The TRANSFER button on the COOLPIX885 and 775 can only be used when the Image Xfer window or Thumbnail List window are displayed.

## Starting Nikon View 4 Without AutoPlay

To prevent the AutoPlay window from opening every time the camera is connected and turn on, select **Copy pictures to a folder on my computer using Nikon View 4** and then check **Always do the selected action** before clicking **OK**.



...and  
check  
this box

The next time the camera is connected and turned on, the AutoPlay window will not be displayed; instead, Nikon View 4 will start automatically.



Note that once **Always do the selected action** has been checked, the AutoPlay window will still be displayed when:

- you connect a camera different from that connected when you checked **Always do the selected action**
  - on a computer with multiple USB boards, you connect the camera to a board different from that to which you first connected the camera
- In these cases, you will need to check **Always do the selected action** again to prevent the AutoPlay window from being displayed the next time the camera is connected.

---

### The Preferences Auto launch Tab

---

If **Always do the selected action** is checked when **Copy pictures to a folder on my computer using Nikon View 4** is selected, Nikon View 4 will start automatically when a COOLPIX995/885/775 is connected to the computer, or when memory card from a Nikon digital camera is inserted in a card reader or PC card slot, even if **Disable Auto launch** is selected in the Auto Start tab of the Nikon View 4 Preferences dialog.

---

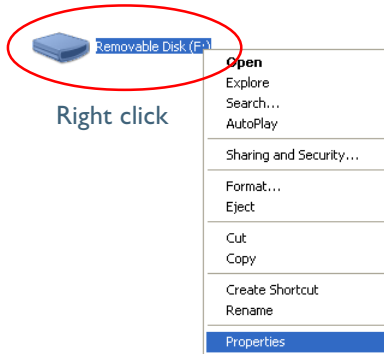
### Memory Cards from Other Makes of Camera

---

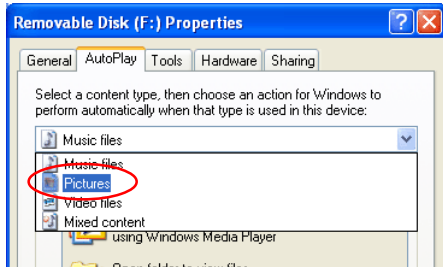
If the AutoPlay window is displayed when you insert a memory card from a non-Nikon camera in a card reader, do not check **Always do the selected action**.

## Displaying the AutoPlay Window

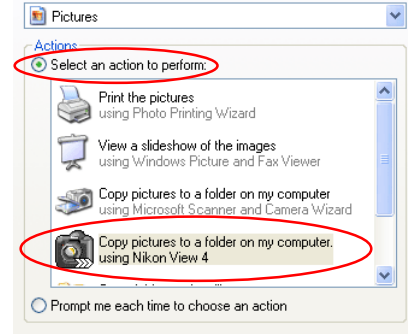
To display the AutoPlay window after selecting Always do the selected action, connect the camera to the computer or insert a memory card from a Nikon digital camera into a card reader or PC card slot and select **My Computer** from the **Start** menu. Click on the removable disk corresponding to the camera with the right mouse button and select **Properties** from the menu that appears.



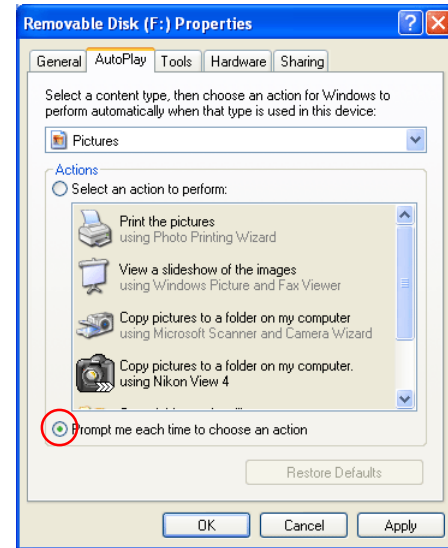
The Removable Disk Properties dialog will be displayed. Open the AutoPlay tab and select **Pictures** from the list of content types.



A list of actions will be displayed with **Copy pictures to a folder on my computer using Nikon View 4** selected.



Check **Prompt me each time to choose an action**.

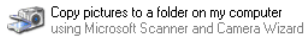


Click **OK** to close the Removable Disk Properties dialog.

## AutoPlay Options

This section outlines the options displayed in the AutoPlay window when the camera is connected and turned on. Refer to Windows XP help and support services for more information.

- **Copy Pictures to a folder on my computer using Microsoft Scanner and Camera Wizard**



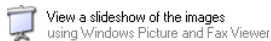
Clicking **OK** in the AutoPlay window when this option is selected will display the Scanner and Camera Wizard, where you can transfer pictures to your computer. This option can also be used to share pictures via the Internet and order prints on-line.

- **Print the pictures using Photo Printing Wizard**



This option opens the Photo Printing Wizard, where you can print pictures with the help of a wizard.

- **View a slideshow of the images using Windows Picture and Fax Viewer**



When this option is selected, the pictures on the memory card will be displayed as a slide show.

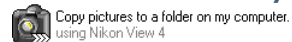
---

### NEF Files

---

The Copy Pictures to a folder on my computer using Microsoft Scanner and Camera Wizard, Print the pictures using Photo Printing Wizard, and View a slideshow of the images using Windows Picture and Fax Viewer options in the Windows XP AutoPlay window do not support NEF files.

- **Copy pictures to a folder on my computer using Nikon View 4**



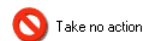
Nikon View 4 will start and the Image Transfer or Thumbnail List window will be displayed.

- **Open folder to view files using Windows Explorer**



This option starts Windows Explorer, where you can navigate through the files and folders on the camera memory card. The camera or memory card will be shown as a removable disk.

- **Take no action**



None of the actions available in the AutoPlay window are performed; the camera or memory card functions as a removable disk only.